



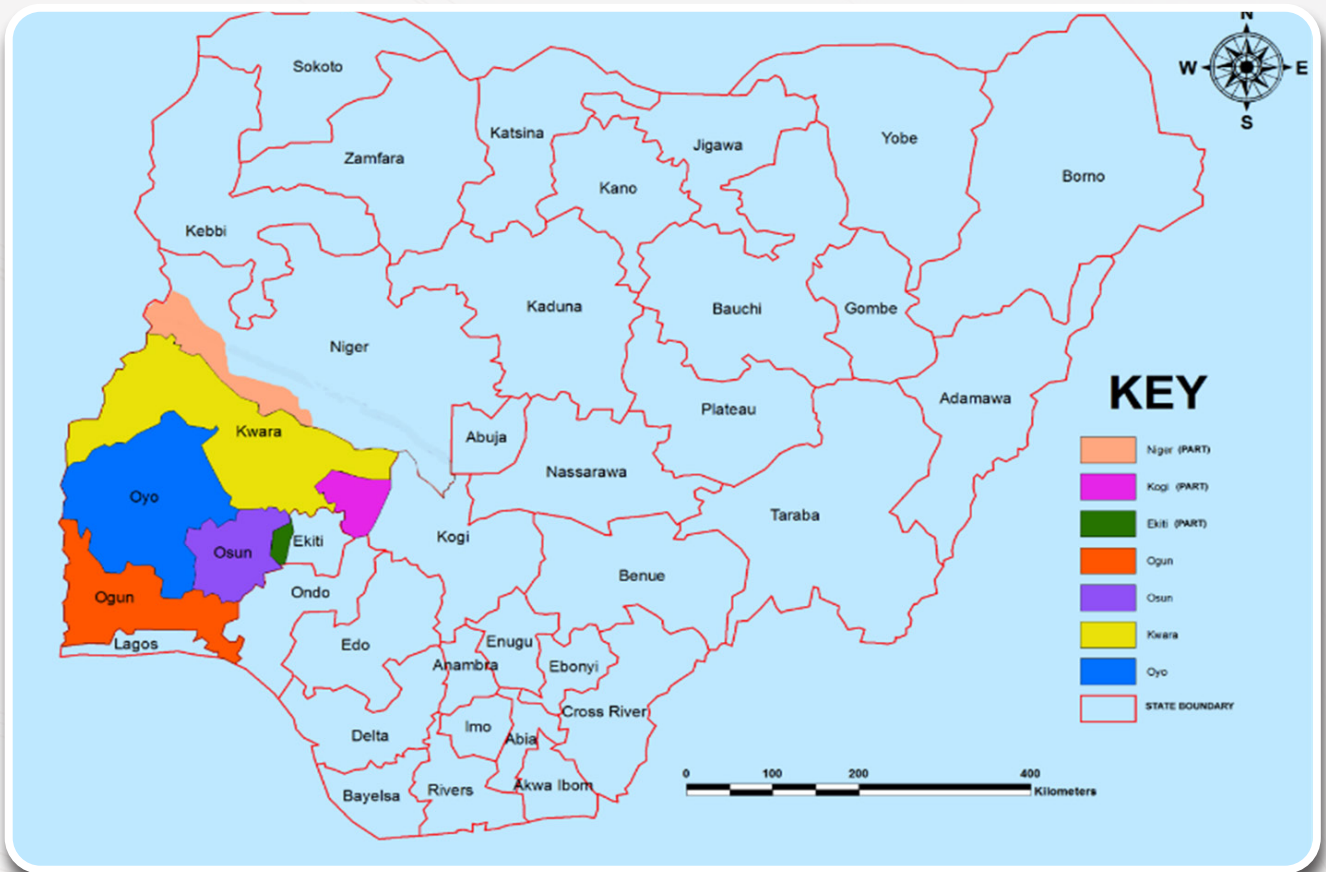
DER OPPORTUNITIES

Ibadan Electricity Distribution
Company Plc



WHO WE ARE

The Largest Electricity Distribution Company in Nigeria by Coverage Area



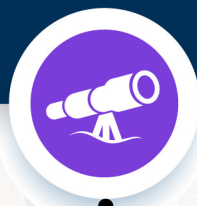
OVERVIEW OF IBEDC

Ibadan Electricity Distribution Company, the largest electricity distribution company in Nigeria by geography, is one of the eleven privatized distribution companies.

Company Statements



Our Mission:
Distributing Power,
Changing Lives



Our Vision:
To be the best power
Distribution Company in
Nigeria



Core Values:
Integrity
Teamwork
Innovation
Dependability
Excellence
(I-TIDE)

Coverage Area:

Full Coverage

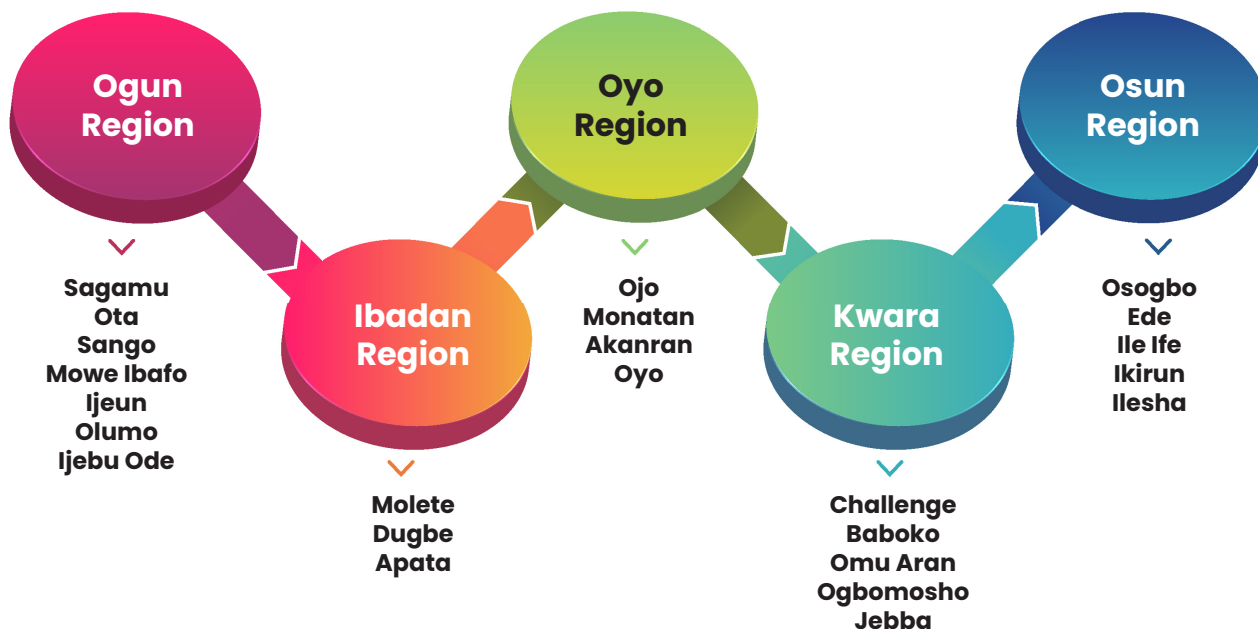
- Ogun
- Oyo
- Osun
- Kwara

Partial Coverage

- Ekiti
- Kogi
- Niger

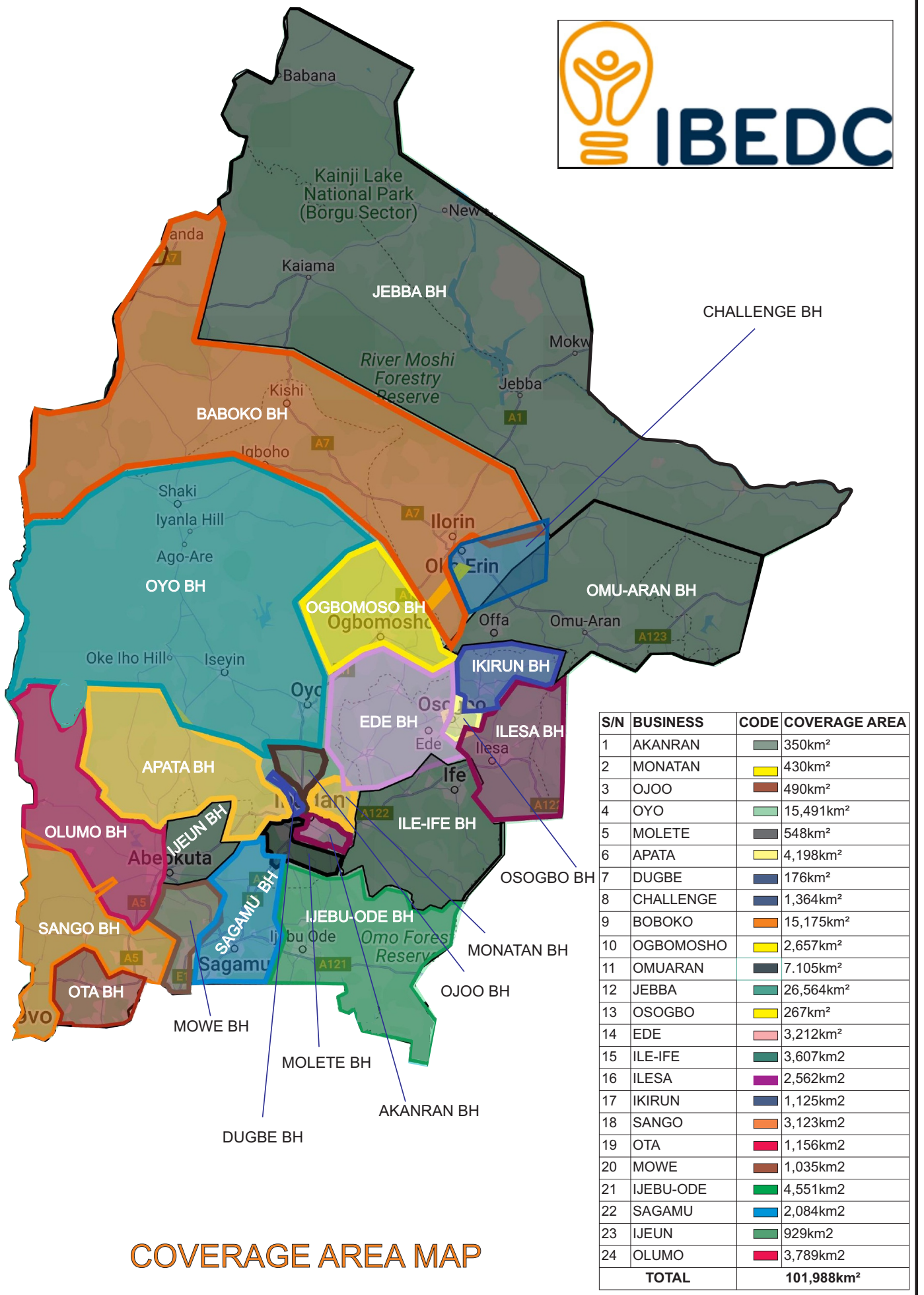
IBEDC AT A GLANCE

- * Ibadan Electricity distribution company, the largest electricity distribution company in Nigeria is one of the eleven privatized distribution companies (60% owned by private investors (Integrated Energy Distribution and Marketing Limited [IEDM] and 40% owned by Federal government) in Nigeria.
- * It is organized into 5 (nos) of Regions and 24 (nos) of Business hubs as shown below ;



Strategic Focus on “Distributed Energy Resources in Nigeria” (DERs Scale-Up)

SN	State	Region	Business Hub	Cluster	Clustered Customer	Status	Contractible Capacity (MW)	Proposed Business Model
1	Kwara	Kwara	Baboko	Afon Town	9,125	Underserved	5	Franchising
2	Kwara	Kwara	Omu-Aran	Egbe	8,133	Underserved	10	Franchising
3	Oyo	Oyo	Oyo	Awe Town	20	Underserved	5.5	Embedded
4	Oyo	Oyo	Oyo	Saki Town	26,625	Underserved	20	Franchising
5	Oyo	Oyo	Oyo	Idigba	7	Underserved	2.5	Embedded
6	Oyo	Oyo	Monatan	Iwo-Ife Road	25	Underserved	5.5	Embedded
7	Oyo	Oyo	Monatan	New Asejire	18	Underserved	5	Franchising
8	Oyo	Ibadan	Apata	Omi-Adio	14,122	Underserved	10	Franchising



COVERAGE AREA MAP

AFON CLUSTER



GIS Map



Region/Area Office
Kwara Region



State
Kwara



**Number of Customers/
connections**
9,125



**Estimated Cluster
Population**
15,147



**Top 3 Economic/
commercial
Activities in the
cluster :**

- Civil Servant
- Artisans
- Hospitality



**Class of customer and
Mix**
Residential: 8,814,
Commercial: 311



Feeder Name :
Ote



**Feeder Voltage
level : 33kV**



Length of the feeder :
237.765Km / RL



Feeder Daily Load Profile on the 33kV of 11kV line for the immediate past month or current results.

FEEDER NAME	PEAK LOAD (MW)	AVERAGE HOS (HRS)	AVERAGE POWER (MW)
Otte 33KV	12	18.7	0



Numbers and ratings of Distribution Transformers in the circuit:
40nos DTs (with total installed distribution capacity of 9,650MVA)



State of network :
Good



Is the area currently unserved or underserved? :
Currently Underserved



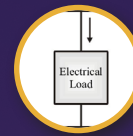
Average hours of supply :
0 hours



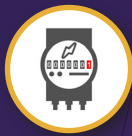
Customer Service Level Band
-



Reason for no supply (Technical or Commercial reason):
Technical (Load Shortages)



Estimated Load Demand :
5MW



Estimated metering rate :
Less than 15%



Security Status :
Save



Road Accessibility Status :
Accessible



PIP-focused Area (Yes/No) :
No

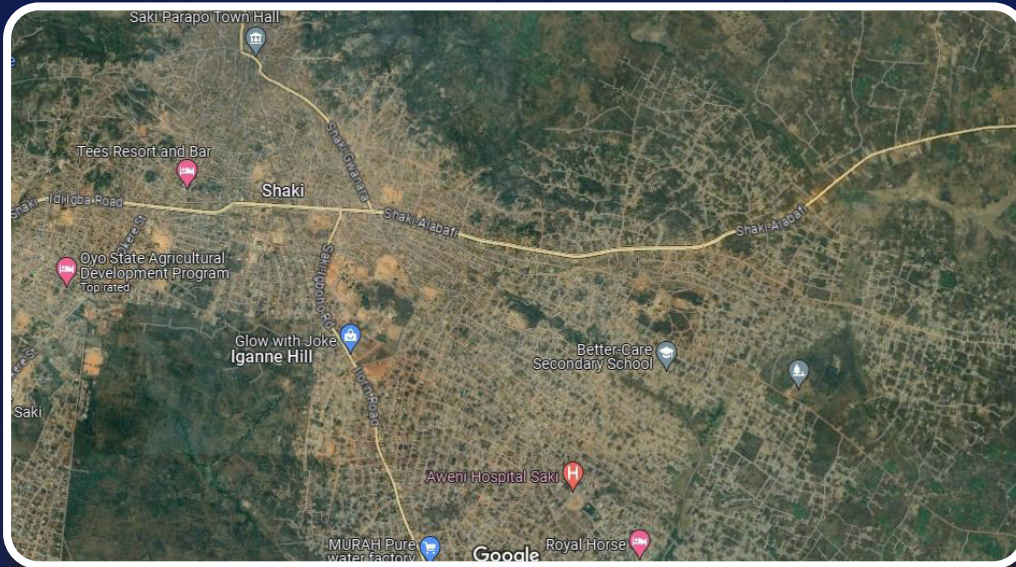


Performance metrics - loss levels:
70%, average collections 45%

AWE CLUSTER



GIS Map



Region/Area Office
Oyo Region



State
Oyo



Number of Customers/connections
Twenty (20) high demand customers



Estimated Cluster Population
119,225



Top 3 Economic/commercial Activities in the cluster :

- Agro-allied
- Businesses,
- Eateries and Educational



Class of customer and Mix
Residential: Nil,
Commercial: 20



Feeder Name :
Oyo



Feeder Voltage level : 33kV



Length of the feeder :
148.929Km / RL



Feeder Daily Load Profile on the 33kV of 11kV line for the immediate past month or current results.

FEEDER NAME	PEAK LOAD (MW)	AVERAGE DAILY HOUR OF SUPPLY (HRS)	AVERAGE POWER (MW)
Oyo 33KV	15	5.3	7.7



CUSTOMER NAME	ESTIMATED PEAK LOAD (MW)	PRIMARY OCCUPATION
BOND CHEMICAL	0.4	FACTORY
OMOTOSHO BVD	0.2	FACTORY
SUNRISE BAKERY	0.1	FACTORY
AMO BYN	0.4	FARMING
AMO HATCHERY 1	0.5	FARMING
AMO HATCHERY 2 (AFSH)	0.5	FARMING
AJILA FARMS	0.3	FARMING
AJAYI CROWTHIER UNIVERSITY	1.5	EDUCATION
FEDERAL SCHOOL OF SURVEY	0.2	EDUCATION
NIGERIAN TELEVISION AUTHORITY	0.2	TELEVISION
STARTIMES	0.1	TELEVISION
DR MABAYOJE	0.1	FARMING
KINADES WATER	0.1	FACTORY
CHICKEN PALACE	0.1	EATERY
AYODARA	0.1	FARMING
BETHY HOTEL	0.1	HOSPITALITY
DSM FOODS	0.2	FACTORY
MULTICHOICE	0.1	TELEVISION
DYNASTY	0.2	RADIO STATION
BAPTIST GUEST HOUSE	0.1	HOSPITALITY
	5.5	



State of network :
Good



Is the area currently unserved or underserved? :
Currently underserved



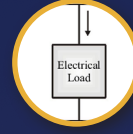
Average hours of supply :
5 hours



Customer Service Level Band
Band E



Reason for no supply (Technical or Commercial reason):
Technical (Load Shortages)



Estimated Load Demand :
5.5MW



Estimated metering rate :
Less than 80%



Security Status :
Save



Road Accessibility Status :
Accessible



PIP-focused Area (Yes/No) :
No



Performance metrics - loss levels:
70%, average collections 45%



Proposed Business Model:
Embedded Generation

AWE CLUSTER

EGBE CLUSTER



GIS Map



Region/Area Office
Kwara



State
Kogi



Number of Customers/
connections
8,133



Estimated Cluster
Population
12,632



Top 3 Economic/
commercial
Activities in the
cluster :

- Civil Servant
- Artisans
- Hospitality



Class of customer and
Mix
Residential: 7,514
Commercial: 911



Feeder Name :
Egbe



Feeder Voltage
level : 33kV



Length of the feeder :
367.765Km / RL



Feeder Daily Load Profile on the 33kV of 11kV line for the immediate past month or current results.

FEEDER NAME	PEAK LOAD (MW)	AVERAGE HOS (HRS)	AVERAGE POWER (MW)
Egbe 33KV	15	18.7	4



Numbers and ratings of Distribution Transformers in the circuit:

76nos DT (with total installed capacity of 20,450MVA)



State of network :
Good



Is the area currently unserved or underserved? :
Underserved



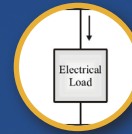
Average hours of supply :
4 hours



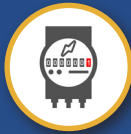
Customer Service Level Band
E



Reason for no supply (Technical or Commercial reason):
Technical (Load Shortages)



Estimated Load Demand :
10MW



Estimated metering rate :
Less than 20%



Security Status :
Save



Road Accessibility Status :
Accessible



PIP-focused Area (Yes/No) :
No



Performance metrics - loss levels:
75%, average collections 43%

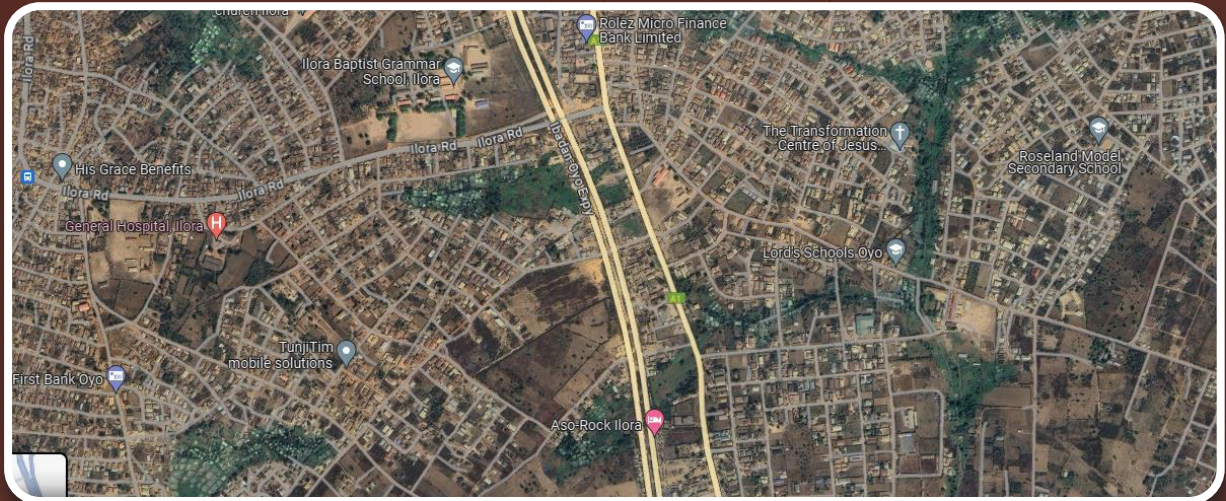


Proposed Business Model:
Embedded Generation

IDIGBA CLUSTER



GIS Map



Region/Area Office
Oyo Region



State
Oyo



Number of Customers/connections
7



Estimated Cluster Population
112,014



Top 3 Economic/commercial Activities in the cluster :

- Agrobusiness
- Factories



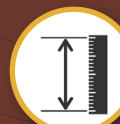
Class of customer and Mix
Residential: Nil
Commercial: 7



Feeder Name :
Oyo 33kV



Feeder Voltage level : 33kV



Length of the feeder :
148.929Km / RL



Feeder Daily Load Profile on the 33kV of 11kV line for the immediate past month or current results.

FEEDER NAME	PEAK LOAD (MW)	AVERAGE HOUR OF SUPPLY (HRS)	AVERAGE POWER (MW)
Oyo 33KV	15	15.3	7.7



Numbers and ratings of Distribution Transformers in the circuit:
7nos DT (with a total installed distribution capacity of 5400MVA)

IDI GBA JOBELE- FIDITI	AGRITED	1	FACTORIES, INDUSTRIES & HATCHERIES	12	NEW OYO (AWE 33KV LEG)	7.7064	3.9063	They are heavy consumers with equipment that draws alot of energy. They are very commercially viable(potential short term expansion of 5 MW
	AYAWA FARMS	0.3				7.67823	3.9116	
	GOOD SAMARITAN	0.3				7.6815	3.9109	
	HIS GRACE	0.1				7.63194	3.8257	
	GOD FAVOUR	0.1				7.62231	3.8122	
	ENGR BOLAJI	0.5				7.61243	3.8254	
	PLAZA DE ARUNA	0.2				7.62191	3.8153	



State of network :
Good



Is the area currently unserved or underserved? :
Underserved



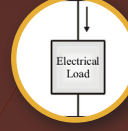
Average hours of supply :
8 hours



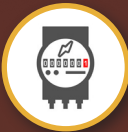
Customer Service Level Band
Band D



Reason for no supply (Technical or Commercial reason):
Technical (Load Shortages)



Estimated Load Demand :
2.5MW



Estimated metering rate :
100%



Security Status :
Save



Road Accessibility Status :
Accessible



PIP-focused Area (Yes/No) :
No



Performance metrics - loss levels:
46%, average collections 87%

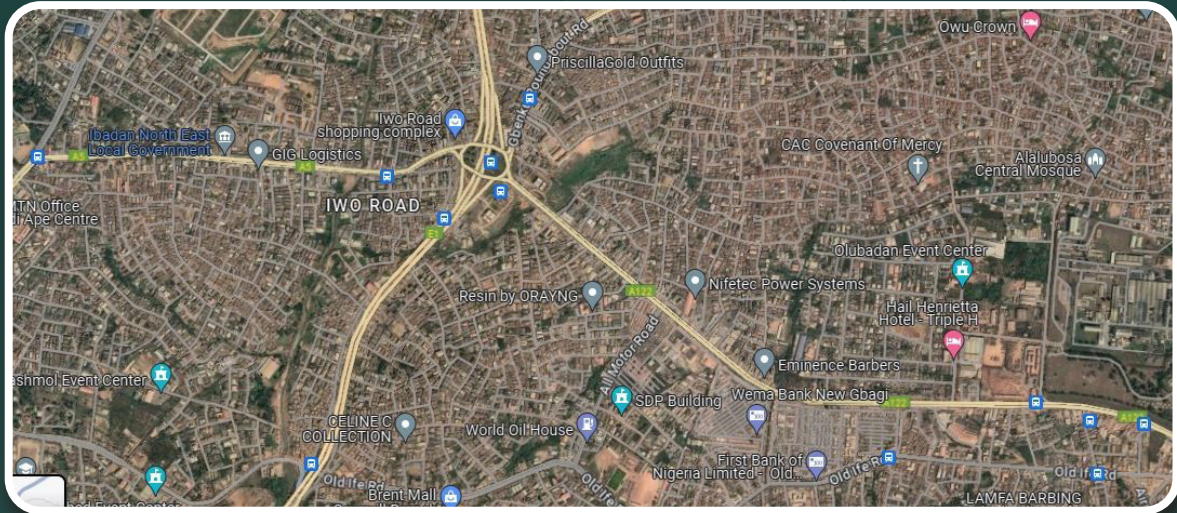


Proposed Business Model:
Embedded Generation

IWO ROAD CLUSTER



GIS Map



Region/Area Office
Oyo Region



State
Oyo



Number of Customers/connections
25



Estimated Cluster Population
326,227



Top 3 Economic/commercial Activities in the cluster :

- Eateries
- Hotels
- Industries



Class of customer and Mix
Residential: Nil
Commercial: 25



Feeder Name :
Moniya 33kV



Feeder Voltage level : 33kV



Length of the feeder :
337.765Km / RL



Feeder Daily Load Profile on the 33kV of 11kV line for the immediate past month or current results.

FEEDER NAME	PEAK LOAD (MW)	AVERAGE HOUR OF SUPPLY (HRS)	AVERAGE POWER (MW)
Moniya 33KV	14	20.3	3.9



Numbers and ratings of Distribution Transformers in the circuit: 25nos DT (with total installed capacity of 5550MVA)

NAME OF CLUSTER	CUSTOMER NAME	Offtakers (Number)	CURRENT SOURCE OF SUPPLY (ISS)	ASSOCIATED SUPPLY CHALLENGES	ESTIMATED PEAK LOAD (MW)	CURRENT HOUR OF SUPPLY (HOS)	FEEDER NAME (WHERE APPLICABLE)
IFE (IWO) ROAD	HAPPY BLUE STAR HATCHERY	18	IBADAN NORTH 2X 60 MVA, 132/33 KV ISS	A CLUSTER OF HIGH ENERGY DEMAND WITH AN INADEQUATE SUPPLY	0.3	8	IBADAN NORTH-MONIYA 33KV LEG
	AZEMOR				0.1		IBADAN NORTH-MONIYA 33KV LEG
	BODE FOAM				0.25		IBADAN NORTH-MONIYA 33KV LEG
	SUNAJ STEEL				0.25		IBADAN NORTH-MONIYA 33KV LEG
	ENERGY PLANET				0.25		IBADAN NORTH-MONIYA 33KV LEG
	TERUDEE				0.3		IBADAN NORTH-MONIYA 33KV LEG
	VIRGO SERVICES				0.1		IBADAN NORTH-MONIYA 33KV LEG
	C.A.C MERCY LAND				0.35		IBADAN NORTH-MONIYA 33KV LEG
	SHRI BALAJ				0.35		IBADAN NORTH-MONIYA 33KV LEG
	SKRETTING				0.35		IBADAN NORTH-MONIYA 33KV LEG
	WATER COORPORATION OF OYO STATE				0.4		IBADAN NORTH-MONIYA 33KV LEG
	FTN				0.4		IBADAN NORTH-MONIYA 33KV LEG
	NIG. BOTTLING COMPANY (COACOLA)				0.55		IBADAN NORTH-MONIYA 33KV LEG
	NIGERIAN BEWERIES				0.4		IBADAN NORTH-MONIYA 33KV LEG
	MERCY WATER				0.1		IBADAN NORTH-MONIYA 33KV LEG
	NUTRI PEAK				0.1		IBADAN NORTH-MONIYA 33KV LEG
	ADRON ESTATE				0.1		IBADAN NORTH-MONIYA 33KV LEG
	TRITON				0.1		IBADAN NORTH-MONIYA 33KV LEG
					5.0		



State of network :
Good



Is the area currently unserved or underserved? :
Yes



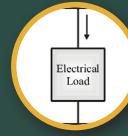
Average hours of supply :
4 hours



Customer Service Level Band
Band E



Reason for no supply (Technical or Commercial reason):
Technical (Load Shortages)



Estimated Load Demand :
5MW



Estimated metering rate :
Less than 75%



Security Status :
Save



Road Accessibility Status :
Accessible



PIP-focused Area (Yes/No) :
No



Performance metrics - loss levels:
loss levels: 30%,
average collections 85%



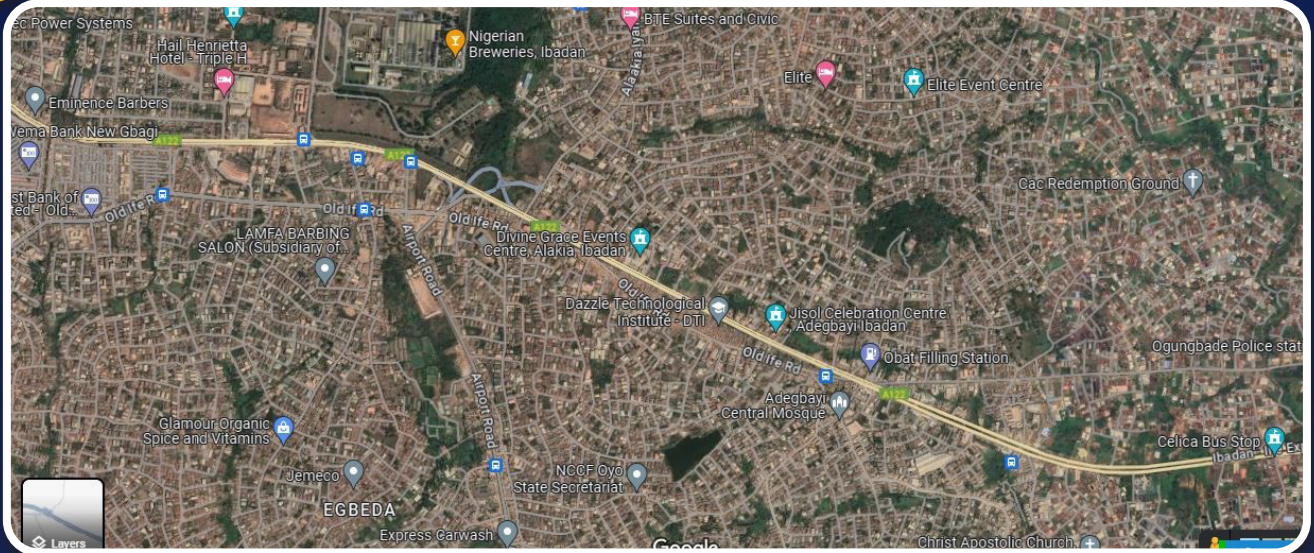
Proposed Business Model:
Embedded Generation

IWO ROAD CLUSTER

NEW ASEJIRE CLUSTER



GIS Map



Region/Area Office
Oyo Region



State
Oyo



Number of Customers/
connections
18

NAME OF CLUSTER	CUSTOMER NAME	CUSTOMER POPULATION	CURRENT SOURCE OF SUPPLY (ISS)	ASSOCIATED SUPPLY CHALLENGES	ESTIMATED PEAK LOAD (MW)	CURRENT HOUR OF SUPPLY (HOS)	UNDERSERVED/ UNSERVED STATUS
IFE (IWO) ROAD	HAPPY BLUE STAR HATCHERY	Point Load	IBADAN NORTH 2X 60 MVA, 132/33 KV ISS	Inadequate supply due to load limitation from the grid	0.3	HATCHERY	UNDERSERVED
	AZEMOR	Point Load			0.1	FISHERING	UNDERSERVED
	BODE FOAM	Point Load			0.25	PRODUCTION	UNDERSERVED
	SUNAJ STEEL	Point Load			0.25	FACTORY WELDING	UNDERSERVED
	ENERGY PLANET	Point Load			0.25	FACTORY WELDING	UNDERSERVED
	TERUDEE	Point Load			0.3	HATCHERY	UNDERSERVED
	VIRGO SERVICES	Point Load			0.1	POLE PRODUCTION	UNDERSERVED
	C.A.C MERCY LAND	Point Load			0.35	PRODUCTION	UNDERSERVED
	SHRI BALAJ	Point Load			0.35	PRODUCTION	UNDERSERVED
	SKRETTING	Point Load			0.35	UNDERSERVED	UNDERSERVED
	WATER COOPERATION OF OYO STATE	Point Load			0.4	PRODUCTION	UNDERSERVED
	FTN	Point Load			0.4	PRODUCTION	UNDERSERVED
	NIG. BOTTLING COMPANY (COCACOLA)	Point Load			0.55	PRODUCTION	UNDERSERVED
	NIGERIAN BEWERIES	Point Load			0.4	PRODUCTION	UNSERVED
	MERCY WATER	Point Load			0.1	PRODUCTION	UNDERSERVED
	NUTRI PEAK	Point Load			0.1	PRODUCTION	UNDERSERVED
	ADRON ESTATE	Point Load			0.1	HOUSING	UNDERSERVED
	TRITON	Point Load			0.1	FISHERING	UNDERSERVED
				5.0			



Estimated Cluster Population
145,127



Top 3 Economic/ commercial Activities in the cluster :

- Commercial
- Factories
- Housing Estate



Class of customer and Mix
Residential: Nil
Commercial: 2
Industrial: 16



Feeder Name :
Adogba & New Asejire 33kV



Feeder Voltage level : 33kV



Length of the feeder :
Adogba: 21.23Km
New Asejire: 122.72Km



Feeder Daily Load Profile on the 33kV of 11kV line for the immediate past month or current results.

FEEDER NAME	PEAK LOAD (MW)	AVERAGE HOS (HRS)	AVERAGE POWER (MW)
ADOGBA 33KV	16.9	19.9	5.3
NEW ASEJIRE 33KV	8.3	16.4	5.1



Numbers and ratings of Distribution Transformers in the circuit:
15nos DTs (with installed capacity of 12,300MVA)



State of network :
Good



Is the area currently unserved or underserved? :
Yes



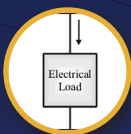
Average hours of supply :
12 hours



Customer Service Level Band
Band C



Reason for no supply (Technical or Commercial reason):
Technical (Load Shortages)



Estimated Load Demand :
5MW



Estimated metering rate :
Less than 75%



Security Status :
Save



Road Accessibility Status :
Accessible



PIP-focused Area (Yes/No) :
No



Performance metrics - loss levels:
35%, average collections 85%

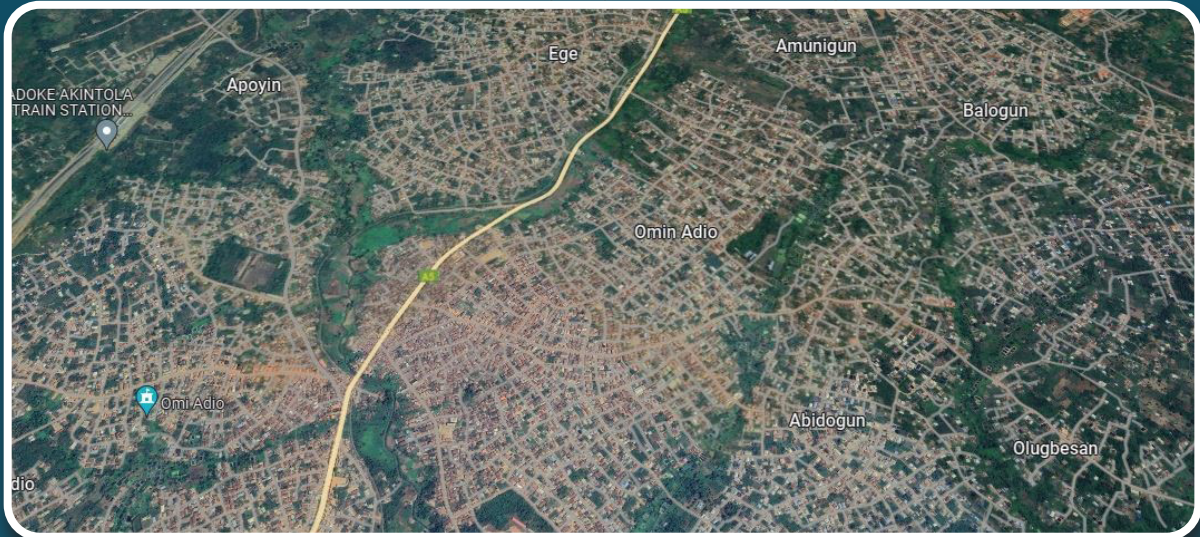


Proposed Business Model:
Embedded Generation

OMI ADIO CLUSTER



GIS Map



Region/Area Office
Ibadan Region



State
Oyo



**Number of Customers/
connections**
14,122



**Estimated Cluster
Population**
29,144



**Top 3 Economic/
commercial
Activities in the
cluster :**

- Small-scale businesses
- Artisans
- Eateries
- Hospitality
- Educational



**Class of customer and
Mix**
Residential: 12,515
Commercial: 1,607



Feeder Name :
Eruwa-Lalate
(Omi-Adio Leg)



**Feeder Voltage
level : 33kV**



Length of the feeder :
147.129Km / RL



Feeder Daily Load Profile on the 33kV of 11kV line for the immediate past month or current results.

FEEDER NAME	PEAK LOAD (MW)	AVERAGE HOS (HRS)	AVERAGE POWER (MW)
Omi 33KV	10.5	12.2	5



Numbers and ratings of Distribution Transformers in the circuit:
Yes



State of network :
Good



Is the area currently unserved or underserved? :
Currently Underserved



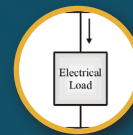
Average hours of supply :
5 hours



Customer Service Level Band
Band E



Reason for no supply (Technical or Commercial reason):
Technical (Load Shortages)



Estimated Load Demand :
10MW



Estimated metering rate :
Less than 40%



Security Status :
Save



Road Accessibility Status :
Accessible



PIP-focused Area (Yes/No) :
No



Performance metrics - loss levels:
65%, average collections 49%

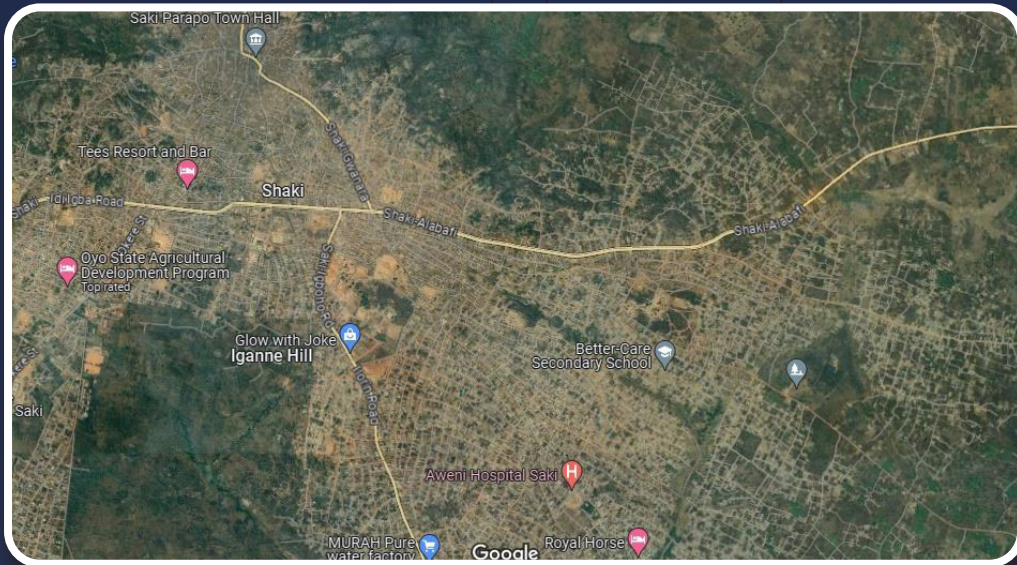


Proposed Business Model:
Franchising

SAKI CLUSTER



GIS Map



Region/Area Office
Oyo, Saki East and West LG



State
Oyo



Number of Customers/connections
26,625



Estimated Cluster Population
433,521



Top 3 Economic/commercial Activities in the cluster :

- Exporter of Cotton
- Swamp Rice (Farming)
- Artisans



Class of customer and Mix
Residential: 22,199
Commercial: 4,629
Industrial: 192



Feeder Name :
Saki



Feeder Voltage level : 33kV



Length of the feeder :
337.765Km / RL



Feeder Daily Load Profile on the 33kV of 11kV line for the immediate past month or current results.

FEEDER NAME	PEAK LOAD (MW)	AVERAGE HOS (HRS)	AVERAGE POWER (MW)
SAKI 33KV	14	20.3	3.9



Numbers and ratings of Distribution Transformers in the circuit:

166nos DT (with installed distribution capacity of 43400MVA)



State of network :
Good



Is the area currently unserved or underserved? :
Yes



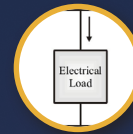
Average hours of supply :
4 hours



Customer Service Level Band
Band E



Reason for no supply (Technical or Commercial reason):
Technical (Load Shortages)



Estimated Load Demand :
18MW



Estimated metering rate :
Less than 15%



Security Status :
Save



Road Accessibility Status :
Accessible



PIP-focused Area (Yes/No) :
No



Performance metrics - loss levels:
75%, average collections 45%



Proposed Business Model:
Franchising

Thank
you